



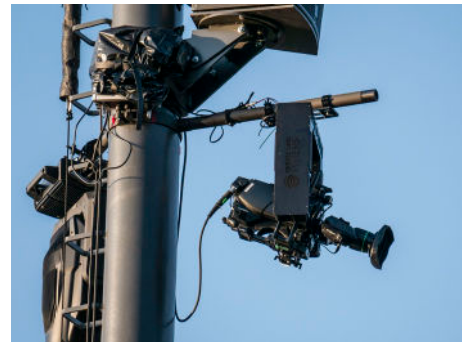
## **RemoteHead 2-axis big**

### **The big RemoteHead**

This 2-axis RemoteHead stabilises both the tilt and pan axis. Focusing on the two most important axes means the Remote-head can be a little smaller and more manageable. Thanks to the modern hanging device, the gimbal big can be mounted in any heights, which allows a spectacular perspective

## RemoteHead 2-axis big

RemoteCamSystems Datasheet



### Technical data - RemoteHead 2-axis big

- 2-axis IMU stabilisation
- 2 x 6-axis gyros for perfect stability in all axes
- Length: 130 mm, width: 410 mm, height: 410 mm
- Gimbal weight 7 kg
- Maximum camera weight 16 kg
- Maximum camera height 650 mm x 320 mm
- Requires a 12-16V power supply
- 3G SDI slip ring for video transmission
- 2 RJ 45 ports for TCP-IP network connections
- 2 Lemo power connectors 12V for camera or accessory (max. 8A)
- Control via network using UDP protocol
- Software Update Port

### Technical data – control

- Length: 405 mm, width: 180 mm, height: 85 mm
- 3.2 inch touch display
- RJ45 POE 24V power supply via network
- Joystick- and speed control for pan/tilt
- Zoom control via Zoomwipe
- Focus control
- Pan/tilt/zoom/focus can be inverted
- Adjustable zoom compensation for pan/tilt
- Adjustable zoom limit

### RemoteHead 2-axis big and control additional options

- 4k support via fibreglass slip ring or 12G SDI
- Support for AR or VR protocols
- Zoom- / Focus control for Canon/Fujinon lenses, motorised control for film cameras